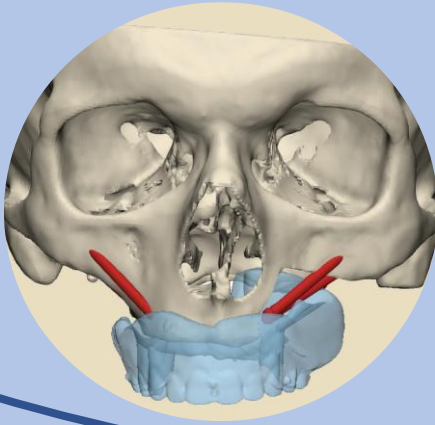


From Resection to Rehabilitation

Guided Zygomatic & Craniofacial Implants in Head & Neck Oncology



Hands-on Cadaver Course | UMC Groningen, The Netherlands
June 4–5, 2026

A two-day immersive course combining **state-of-the-art digital workflows**, **guided surgery**, and **hands-on cadaveric training** for complex zygomatic and craniofacial implant rehabilitation in head & neck oncology.

Learning Outcomes

After completing this course, participants will be able to:

1. **Understand and apply in a simulated setting** the principles and workflow of guided maxillectomy, guided zygomatic implant placement and extra-oral implant placement for auricular, nasal, and orbital rehabilitation using simulation exercises and cadaveric training.
2. **Recognize** the indications, challenges, and potential benefits of zygomatic implants and craniofacial endosseous implants in oncologic reconstruction.
3. **Explain** the role of digital planning tools and guided workflows in zygomatic and extra-oral implant placement.
4. **Demonstrate** the procedural steps of guided zygomatic and extra-oral implant placement in a simulation and cadaveric setting.

The course is made possible by

PROSCAN

3D Lab
Groningen
Patient Care & Innovation


SOUTHERNIMPLANTS®
Innovative Treatment Solutions

 DamMedical

UMCG:

Program Overview

Thursday – June 4, 2026

📍 Prinsenhof Groningen, Martinikerkhof 23



| Time | Session |
|-------|--|
| 08:45 | Registration & Coffee |
| 09:00 | Welcome – <i>Baucke van Minnen</i> |
| 09:10 | Course overview & clinical introduction – <i>Sebastiaan de Visscher</i> |
| 09:30 | Challenges in oral and craniofacial implant replacement – <i>Gerry Raghoobar, Nathalie Vosselman</i> |
| 10:00 | Virtual surgical planning of implant placement – <i>Sander Tabernée Heijmeijer</i> |
| 10:20 | Coffee break |
| 10:50 | Use of zygomatic implants in head & neck patients: indications and developments – <i>Chris Butterworth</i> |
| 11:20 | Instruction model surgery part 1 |
| 11:30 | Model surgery part 1: conventional placement of zygomatic implants – <i>Faculty</i> |
| 12:30 | Lunch |
| 13:30 | Planning & surgery; 3D workflow – <i>Sebastiaan de Visscher, Joep Kraeima, Nathalie Vosselman</i> |
| 14:15 | Instructions model surgery part 2 |
| 14:25 | Model surgery part 2: guided approach zygomatic – <i>Faculty</i> |
| 15:25 | Instructions model surgery part 3 |
| 15:30 | Model surgery part 3: craniofacial implants – <i>Faculty</i> |
| 16:15 | Case presentations – <i>Chris Butterworth</i> |
| 16:30 | Case presentations – <i>Sebastiaan de Visscher, Nathalie Vosselman</i> |
| 17:00 | Closure & drinks |
| 19:00 | Course dinner – Restaurant Feithuis , Martinikerkhof 10, Groningen |

Program Overview

Friday – June 5, 2026

📍 *Anatomy Lab, UMCG*



Faculty

- Chris Butterworth
- Gerry Raghoobar
- Sebastiaan de Visscher
- Nathalie Vosselman
- Joep Kraeima
- Sander Tabernée Heijmeijer
- Maarten Heuvels

| Time | Session |
|-------|--|
| 08:30 | Meeting at Lobby NH Hotel , walk to Anatomy Lab UMCG – <i>Faculty</i> |
| 09:00 | Instruction cadaveric course – <i>Faculty</i> |
| 09:10 | Instruction by the faculty – <i>Faculty</i> |
| 09:30 | Hands-on (part 1): guided resection and placement of zygomatic implants – <i>Faculty</i> |
| 12:00 | Lunch – Grand Café UMCG |
| 13:30 | Hands-on (part 2): craniofacial implants (nasal, orbital, mastoid) – <i>Faculty</i> |
| 15:30 | Wrap-up – <i>Faculty</i> |
| 16:00 | Close & depart |